

Silver Cross®



Sovereign Highchair

Instructions

IMPORTANT!
KEEP FOR FUTURE REFERENCE

Please read these instructions carefully before using your new Highchair.
Keep them in a safe place so that you can use them in the future.



SOVEREIGN HIGHCHAIR - INSTRUCTIONS

VERY IMPORTANT

Please read the whole of this instruction guide carefully. Failure to do so could put your child in danger. The **Sovereign** highchair is suitable from approximately four months to three years.

Do not leave the child unattended and use the 5 point harness and safety tray at all times.

If somebody unfamiliar is using your **Sovereign** highchair always ensure that they read these instructions carefully so that they understand how the product works best.

***DO NOT USE THE HIGHCHAIR WITHOUT THE SAFETY TRAY FITTED**

CONTENTS

Description	Page No.
1 Important safety guide and Microban	2
2 Parts list: box contents	3
3 Assembling the Sovereign	4-5
4 Fitting the PVC seat padding	6-7
5 Fitting the basket and tray	8
6 Using the height and recline operation	9-10
7 Storage instructions	11-12
8 Safety notes	12
9 Warnings	13
10 Care and Maintenance	13
11 Guarantee	13

1. IMPORTANT: SAFETY GUIDE

***NEVER USE THE SOVEREIGN HIGHCHAIR WITHOUT THE SAFETY TRAY FITTED.**

IMPORTANT: DO NOT REMOVE THE SAFETY TRAY AT ANY TIME.

Read the whole instruction manual and make sure that you fully understand how to assemble and use the Sovereign Highchair correctly.

Always keep your instructions manual to hand.

Always use the wheel lock when the Sovereign Highchair is in use.

The 5 point safety harness and safety tray must be used at all times.

Never leave your child unattended when using the Sovereign Highchair.

Do not allow children to play with the Sovereign Highchair.

Always store the Sovereign Highchair in a safe, dry place when it is not in use.

Never use the Sovereign Highchair without the seat padding.

Do not use the Sovereign Highchair unless all components are fitted and adjusted correctly.

Be aware of the risk of open fire and other strong sources of heat.

SILVER CROSS WITH MICROBAN ANTIBACTERIAL PROTECTION



Microban is an 'invisible protector' which stops bacteria in their tracks.

The addition of Microban technology inhibits growth of household bacteria which comes into contact with the surface.

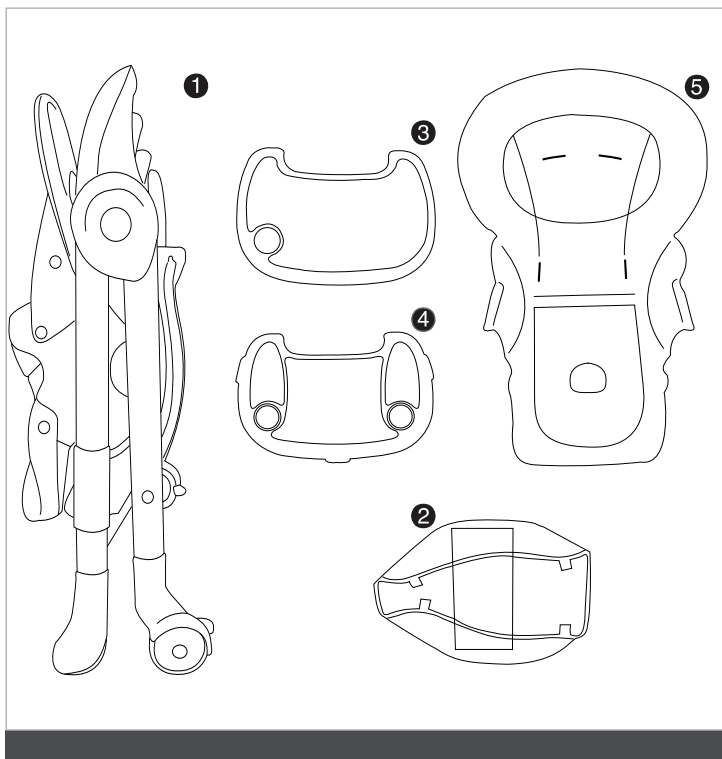
Your Sovereign Highchair therefore has:

- locked in protection which cannot wash or wear out.
- a constant protector, which lasts for the lifetime of the product.
- built-in hygiene and freshness.

Microban and the Microban symbol are trade marks of Microban Products Company, Huntersville, NC, USA.

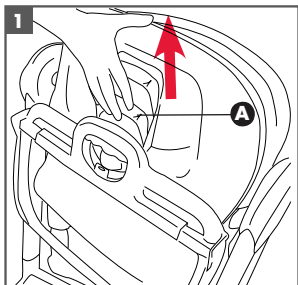
Microban protection is not a substitute for normal hygiene practices.

2. PARTS LIST: BOX CONTENTS



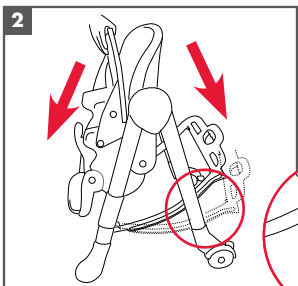
1. Folded seat unit with fixed safety tray
2. Mesh basket
3. Play Tray
4. Feeding Tray
5. PVC Seat Padding

3. ASSEMBLING THE SOVEREIGN HIGHCHAIR



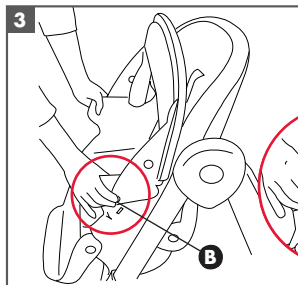
1 Ensure wheel lock is released before assembly.

Pull the recline release handle (A) upwards to release the basket frame.



2 The Sovereign Highchair will automatically unfold and the frame will click into place.

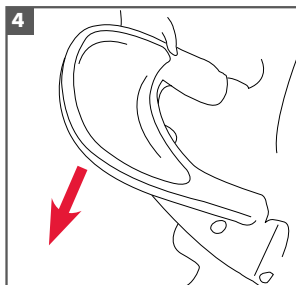
NOTE: ENSURE THAT THE LOCK ON THE FRAME IS FULLY ENGAGED ON BOTH SIDES BEFORE USE!!



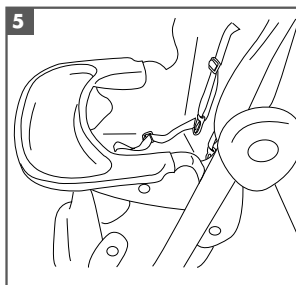
3 Fitting the Safety Tray:
Push in the safety buttons (B) on both sides of the highchair and push the tray downwards.

3. ASSEMBLING THE SOVEREIGN HIGHCHAIR (CONT.)

The tray will click into place when pushed down and will be secured in its use position by the safety buttons on each side of the highchair.

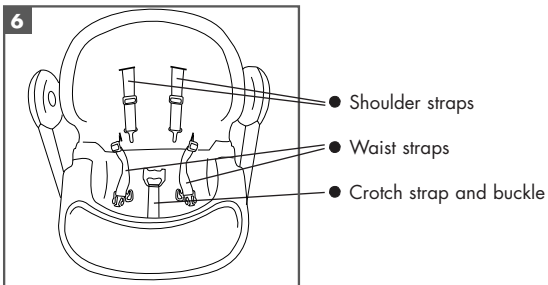


NOTE: NEVER USE THE HIGHCHAIR WITHOUT THE SAFETY TRAY SECURELY FITTED. THE SAFETY TRAY MUST NEVER BE REMOVED FROM THE SEAT UNIT.

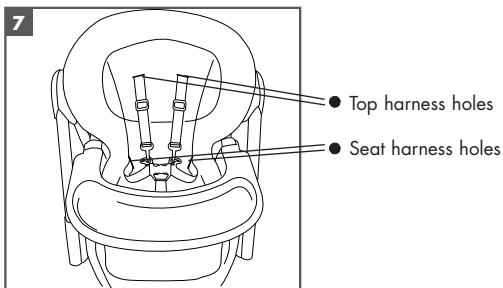


4. FITTING THE PVC SEAT PADDING

HARNESSES POSITIONS



ASSEMBLED HARNESSES



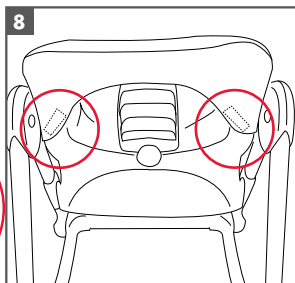
Place the pad over the seat unit and feed the five-point harness through the harness holes in the cover. To do this, pass the shoulder straps through the top harness holes in the seat padding. The waist straps are passed through the holes at the bottom of the back panel of the seat pad. The buckle and crotch strap are passed through the harness hole in the seat pad and the waist straps are clicked into the buckle to secure. The shoulder straps are then attached to the buckle using the harness clips.

The crotch pole is then passed through the hole in the seat padding and the cover is secured over the backrest of the seat.

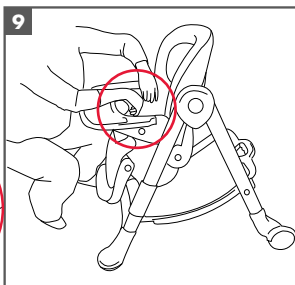
4. FITTING THE PVC SEAT PADDING (CONT.)

The padding is secured in place by 4 small velcro strips on the seat padding.

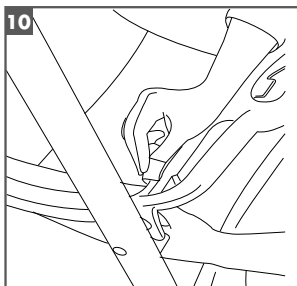
Remove the backing from the velcro on the seat padding and secure to the back of the seat unit.



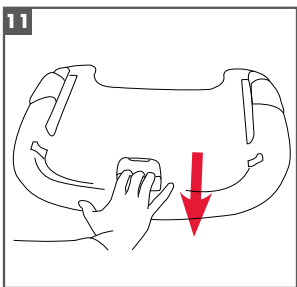
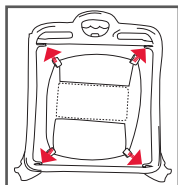
Remove the backing from the velcro on the inside wings of the seat padding and secure to the inside arm of the seat unit.



5. FITTING THE BASKET AND TRAY

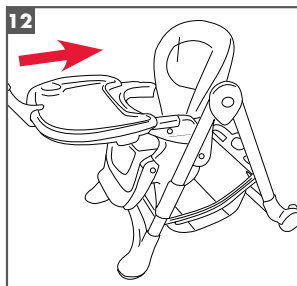


The basket is fitted using four small loops which attach to the basket frame. The loops are slotted over four small plastic clips on the frame.



To fit the play tray, position over the safety tray and pull the handle on the underside firmly.

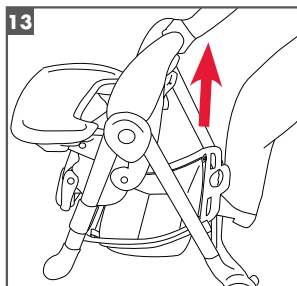
Slide onto the safety tray until it locks into position



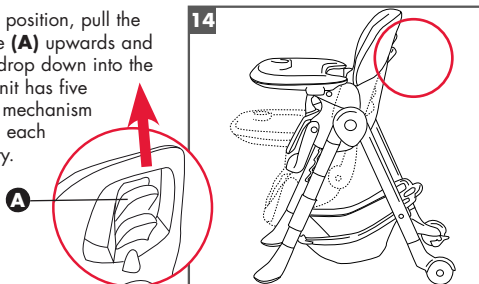
The tray has five different positions which allow the tray to move closer to the child, with each position locking into place.

6. USING THE HEIGHT AND RECLINE OPERATION

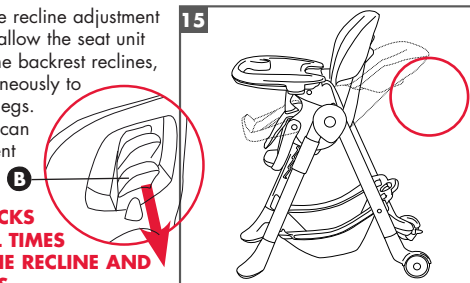
From its lowest position the highchair seat unit can be raised by placing one foot firmly onto the back of the basket frame and gently pulling the top of the seat unit upwards in one movement.



To then adjust the height position, pull the height adjustment handle (A) upwards and gently allow the seat to drop down into the next position. The seat unit has five height positions and the mechanism is a smooth motion, with each position locking for safety.



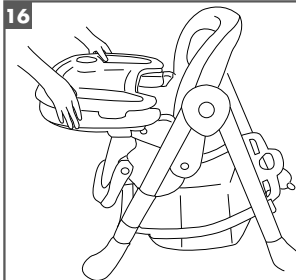
To recline the seat, pull the recline adjustment handle (B) upwards and allow the seat unit to move backwards. As the backrest reclines, the footrest will lift simultaneously to accommodate the child's legs. The backrest and footrest can be adjusted in four different positions.



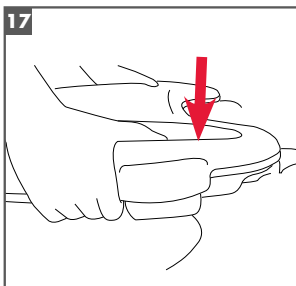
NOTE: THE WHEEL LOCKS MUST BE USED AT ALL TIMES WHEN OPERATING THE RECLINE AND HEIGHT ADJUSTMENTS.

6. USING THE HEIGHT AND RECLINE OPERATION (CONT.)

FITTING THE FEEDING TRAY



To fit the feeding tray, the play tray must be previously fitted to the highchair.



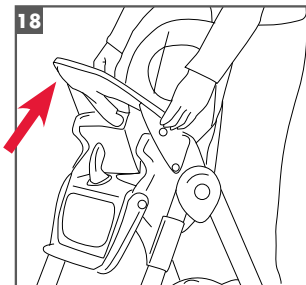
The feeding tray easily clips over the top of the play tray.

**ENSURE THE FEEDING TRAY SECURELY
CLICK INTO PLACE BEFORE USE!**

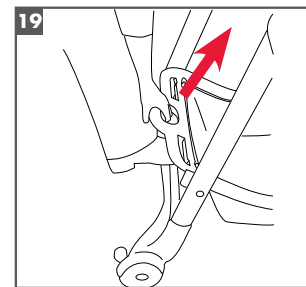
7. STORAGE INSTRUCTIONS

NOTE: TO STORE THE HIGHCHAIR THE SEAT UNIT MUST BE IN ITS LOWEST, MOST UPRIGHT POSITION. FIRSTLY, REMOVE THE PLAY TRAY AND FEEDING TRAY FROM THE HIGHCHAIR AND RELEASE THE WHEEL LOCKS. THE SAFETY TRAY SHOULD THEN BE FOLDED SHUT.

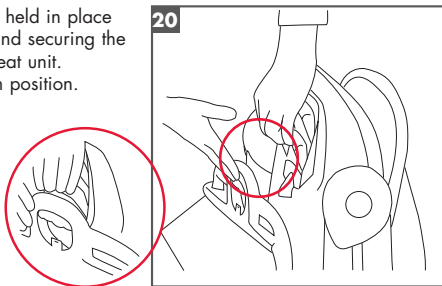
To do this press the safety buttons on both sides of the tray and push the tray upwards until it clicks into a locked position.



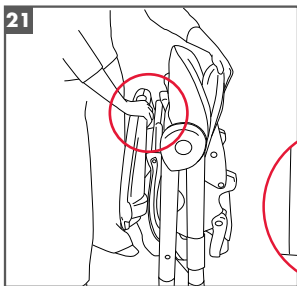
Place one foot onto the back of the basket frame and pull the handle towards you. Whilst pulling on the handle, pull the frame towards you and the chair will automatically fold.



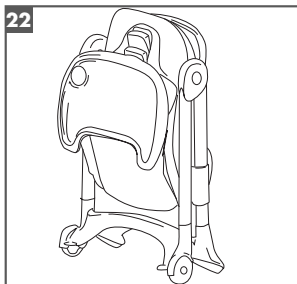
When the chair is folded it is held in place by lifting the recline handle and securing the frame under the clip on the seat unit. The seat unit is now locked in position.



7. STORAGE INSTRUCTIONS (CONT)



The play tray and feeding tray can be attached to the seat unit by putting them onto a small clip on the back of the seat unit.



The highchair is now small and compact for storage.

8. SAFETY NOTES

Your Sovereign Highchair is a high quality Silver Cross product. It complies with BS EN 14988-1:2006 and with correct use and maintenance should give good service. If, however, you should have any problems with your highchair, please contact your Silver Cross retailer who will take the appropriate action.

9. WARNINGS

WARNING: DO NOT LEAVE THE CHILD UNATTENDED.

WARNING: MAKE SURE THAT ANY HARNESS IS CORRECTLY FITTED.

WARNING: DO NOT USE THE HIGHCHAIR UNLESS ALL COMPONENTS ARE CORRECTLY FITTED AND ADJUSTED.

WARNING: DO NOT USE THE HIGHCHAIR UNTIL THE CHILD CAN SIT UP UNAIDED.

WARNING: DO NOT USE THE HIGHCHAIR IF ANY PART IS BROKEN, TORN OR MISSING.

WARNING: BE AWARE OF THE RISK OF OPEN FIRE AND OTHER SOURCES OF STRONG HEAT, SUCH AS ELECTRIC BAR FIRES, GAS FIRES ETC, IN THE VICINITY OF THE HIGH CHAIR.

10. CARE AND MAINTENANCE

Always check your Highchair for signs of wear.

Check for freedom of movement of all locking devices.

Fabric items and seat unit.

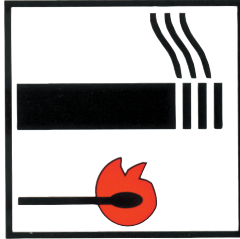
To clean, sponge area with warm, soapy water. Rinse well with clean water to avoid staining. Allow to dry naturally, away from direct heat and strong sunlight. A certain degree of fading may occur over time through everyday use.

Never machine wash, tumble dry, iron or bleach.

11. GUARANTEE

All Silver Cross products are guaranteed for a period of six months against faulty workmanship.

PLEASE READ THESE INSTRUCTIONS CAREFULLY BEFORE USING YOUR NEW SOVEREIGN HIGHCHAIR AND KEEP FOR FUTURE REFERENCE.



RESISTANT

**Filling material(s) and
covering fabric(s) meet the
requirements for resistance to
cigarette and match ignition in
the 1988 safety regulations.**

**CARELESSNESS
CAUSES FIRE**

Silver Cross (UK) Ltd
Nesfield House
Broughton Hall
Skipton
North Yorkshire
BD23 3AN

Telephone: 01756 702412
Website: www.silvercross.co.uk