

mothercare



Columbia Car Seat

User Guide

IMPORTANT

Please retain this User Guide for future reference

Conforms to
ECE R44.03
Universal

EXTREME HAZARD: Parents should not under any circumstances use this child restraint on a passenger seat equipped with an airbag.

Safety warnings

- **PLEASE READ THOROUGHLY BEFORE COMMENCING INSTALLATION AS AN INCORRECT INSTALLATION COULD BE DANGEROUS.**
- **DO NOT USE THIS CHILD SEAT IN PASSENGER SEATS EQUIPPED WITH AIRBAGS.**
- This child seat must only be installed in a forward facing position in passenger seats. Do not use on side facing or rear facing seats.
- Never use this child seat without fastening the child's harness correctly, (where applicable) and never attempt to use it without fastening it into the car as described in these instructions.
- Do not add to or modify the seat in any way.
- It is recommended that this car seat should be changed when it has been subjected to violent stresses in an accident or has become badly worn. Periodically inspect the harness for wear, paying particular attention to the attachment points, stitching and adjusting devices.
- Do not leave your child unattended in the seat at any time.
- Ensure that no part of the seat is trapped in a door or folding seat. If your car has a folding rear seat, ensure that it is correctly latched in the upright position.
- Car interiors can become very hot when in direct sunlight, it is therefore recommended that the child seat is covered when not in use. This prevents components, particularly those attached to the child seat, becoming hot and burning the child.
- In the event of an emergency it is important that the child can be released quickly. This means that the buckle is not fully tamperproof and so your child must be taught **never** to play with the buckle.
- Luggage and other heavy or sharp objects should be secured in the car. Loose objects are liable to cause injury in the event of an accident.
- The safest seating position for a child car seat is on the rear seat of a vehicle.

2

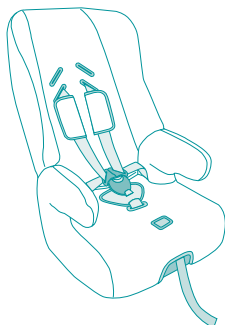
Getting to know your child seat

This seat is classified as:

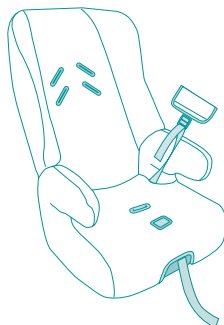
Group 1 for children weighing from 9kg to 18kg - (9 months - 4 years approx.) - in a forward facing position.

Group 2 for children weighing from 15kg to 25kg (4 - 6 years approx.) - in a forward facing position.

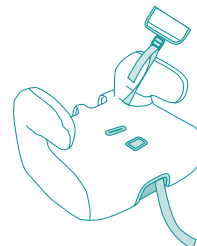
Group 3 for children weighing from 22kg to 36kg (4 - 11 years approx.) - in a forward facing position.



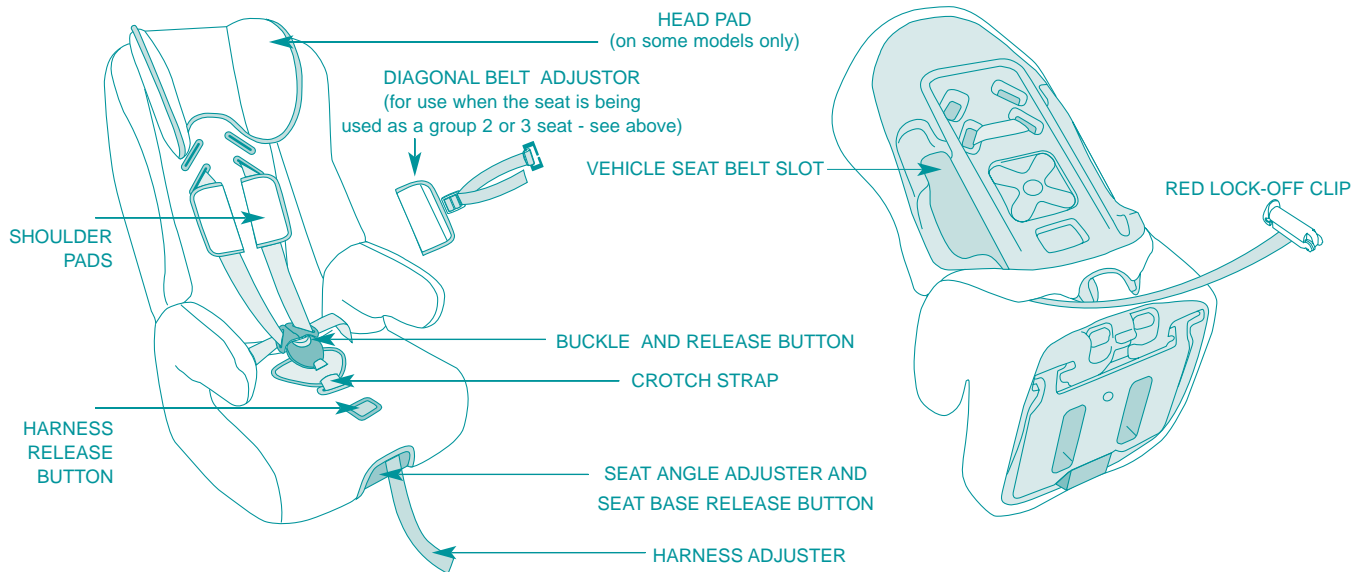
SET UP FOR USE BY
9-18kg CHILDREN
GROUP 1



SET UP FOR USE BY
15-25kg CHILDREN
GROUP 2



SET UP FOR USE BY
22-36kg CHILDREN
GROUP 3

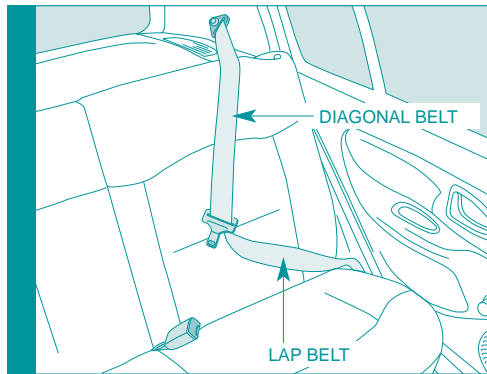


FRONT OF SEAT

REAR OF SEAT

3

The type of approved seat belt you must have



Your Mothercare child seat can only be installed forward facing using a lap and diagonal seat belt in the rear passenger seats of the car.

DO NOT USE THIS CHILD SEAT IN PASSENGER SEATS EQUIPPED WITH AIRBAGS

4

Legal requirements

This child seat is approved to ECE R44.03 and is **ONLY** suitable for use with a 3 point lap and diagonal seat belt, approved to UN/ECE Regulation No.16 or other equivalent safety standards.

Front Seat

Anyone, especially children, travelling in the front seat of a car must be properly restrained. Children under three years must use a suitable approved restraint designed for their weight.

Rear Seat

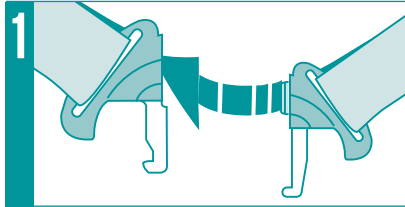
All adults and children must use seat belts or child restraints where they are fitted in the rear of a car and are available for use.

If the appropriate restraint is not available, children from 3 years **must** wear an adult seat belt if available.

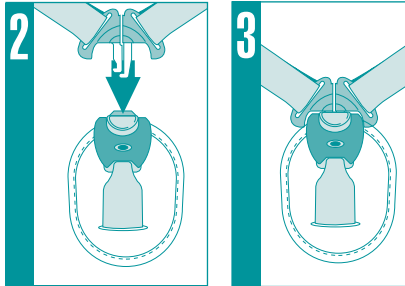
5

Important notes

- **Keep this user guide in a safe place where it can easily be found.**
- When the child seat is not in use, it is recommended that it is fastened into the car with a seat belt to avoid being thrown about in the event of an accident.
- In an emergency your child can be released quickly by pressing the red button on the harness buckle.
- If you travel with passengers using both the front and rear seats, the lighter occupants should be in the rear seats and the heavier occupants in the front of the vehicle. When a child is in the front seat, the lighter passenger should be behind the child.
- Do not allow the child seat to come into contact with corrosive substances e.g. battery acid.

Doing up the harness

Place the left hand harness connector behind the right hand one, they should slot together neatly.

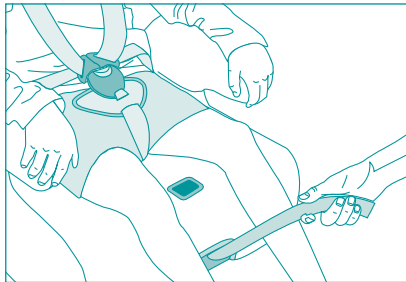


Push the harness ends into the hole in the buckle at the top of the crotch strap.

You will hear and feel a 'CLICK' when it is secure.

Check by attempting to remove the connectors by pulling the webbing above and below the buckle. Periodically check that your child has not released the buckle.

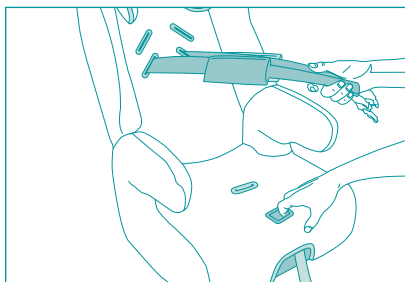
(To release the harness, press the red button down.)

Tightening the harness

Pull gently on the harness adjuster to take up any slack in the harness.

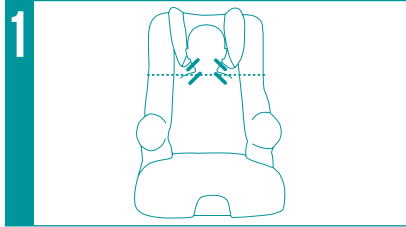
A loose harness is dangerous, check it every time you use the seat.

It is recommended that there is just enough room to insert one finger between the shoulder straps and the child's chest.

Loosening the harness

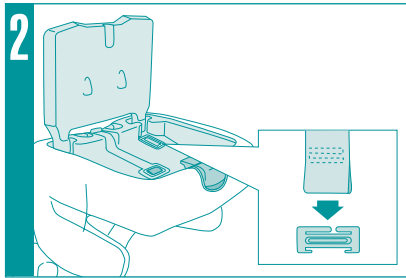
If the harness is too tight, loosen it by pulling on both straps.

At the same time, press on the tab through the hole in the seat cover.

Adjusting the shoulder height

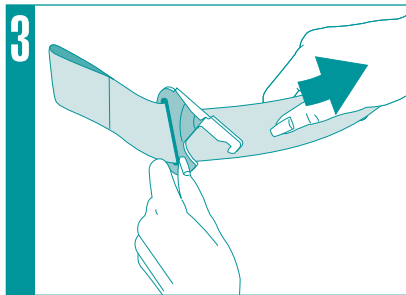
The harness has 2 height positions.

The straps should go into the slots nearest to the top of your child's shoulders.



To adjust the shoulder straps of the harness, first turn the seat upside down. Press the red button to release the seat base flap. Remove the blue plastic clip from the end of ONE of the straps. Leave the other shoulder strap in place as a reference for now.

Feed the strap through the BOTTOM of the child seat.

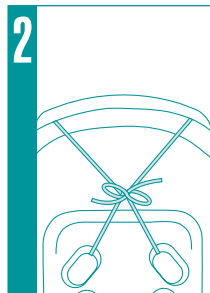
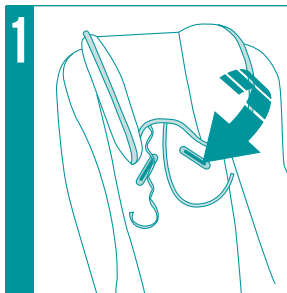


Remove the buckle connector from the strap.

Feed the strap through the BACK of the car seat and then return it through the slot at the correct height.

Replace the buckle connector, then push the shoulder strap back through the BOTTOM of the child seat. Re-fit the blue plastic clip.

Repeat 2 and 3 above for the other shoulder strap.

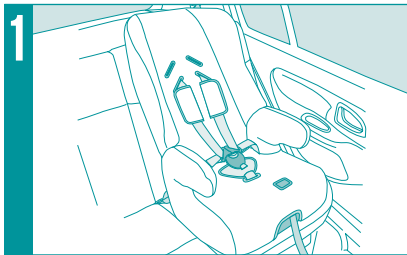
Fitting the headrest (on some models only)

To fit the headrest, thread one of the ribbons through one of the top harness slots and the other ribbon through the other slot. Tie them through the loop at the back of the child seat.

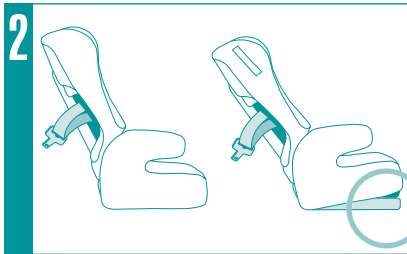
Fitting your child seat into your car

WARNING: Do not use this child seat in passenger seats fitted with airbags.
Do not use on rear-facing or side-facing vehicle seats.
If the seat angle is changed after installation, the seat belt must be re-tightened and the red 'lock-off' (when fitted) must be adjusted.

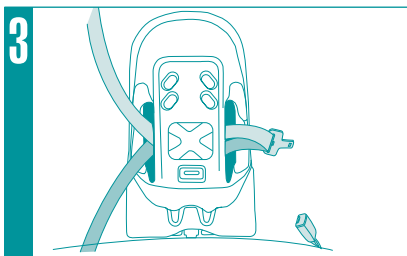
To set up for use from 9kg to 18kg



Place the child's car seat on a passenger seat with a 3 point seat belt. Make sure the child seat is facing towards the front of the car.



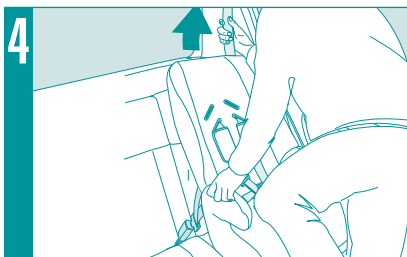
The complete seat can be angled further backwards. Press the red seat base release button and release the seat base. Once the seat base has been opened it will rest on the red button. This angled position is useful when baby is sleeping.



Pull the lap and diagonal sections of the car seat until fully extended. Feed the seat belt through the slot in the back of the car seat.

Make sure that there are no kinks or twists in the car seat belt.

Fasten the seat belt in the normal way.



Put your knee on the child seat to push it right down into the car seat. Tighten the shoulder section of the seat belt by pulling it in the direction shown.

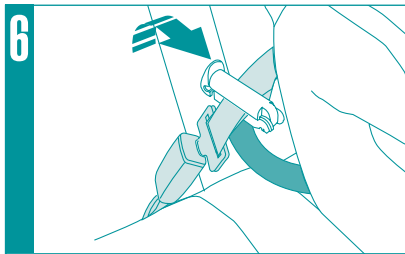
Fitting your child seat into your car



Pull the red 'lock off' clip around from the back of the seat towards the car seat belt buckle.

Then open the red 'lock off' clip and lay both the diagonal and lap sections of the seat belt on it.

Make sure the seat belt is secure as you are doing this.



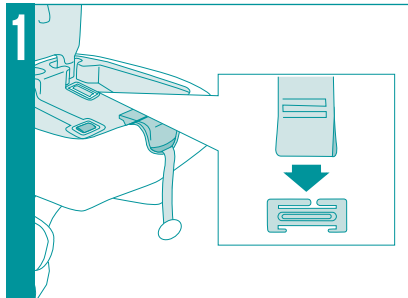
Close the red 'lock off' clip and secure its catch.

Your car seat should now be fixed securely. Make sure it is.

IMPORTANT

If you change the seat angle (see picture 2 on page 7) you should re-tighten the seat belt and re-fit the red 'lock off' clip to ensure the seat belt is tight.

To set up for use from 15kg to 25kg

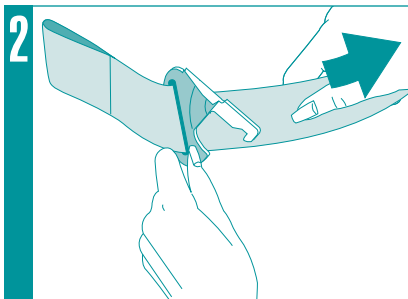


Your child will be secured using the cars' seat belt.

Therefore you should remove the child seats' harness as follows:

Turn the seat upside down and press the red button to release the seat base flap. Remove the blue plastic clips from the ends of both of the shoulder straps.

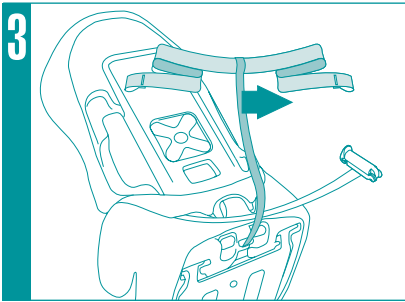
Feed the straps through the bottom of the child seat.



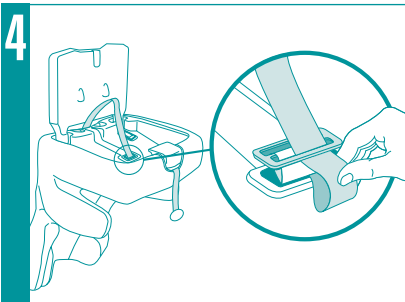
Remove the shoulder pads and buckle connectors from the straps.

Feed both the shoulder straps through the back of the car seat.

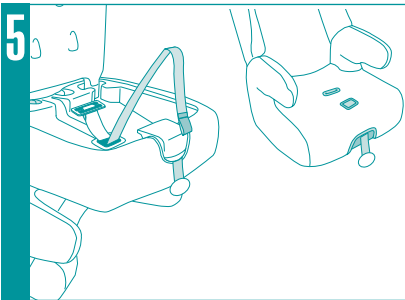
Fitting your child seat into your car



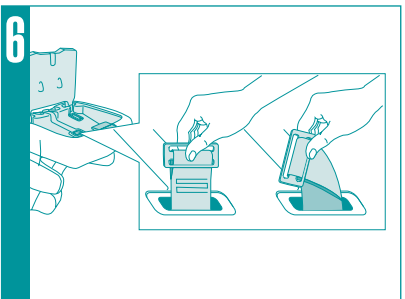
Pull the shoulder straps off the harness adjuster. Remove the Red lock off clip. The plastic retaining keeper at the seat end of its strap can be twisted around and passed through the slot in the back of the seat.



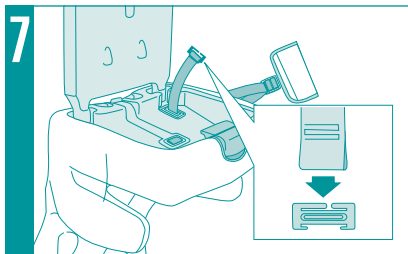
Open the seat base. Pull the harness adjuster back (towards the front of the seat) and completely out of the retaining keeper which is fitted to the crotch strap. **DO NOT PULL THE HARNESS ADJUSTER BACK THROUGH THE SEAT BASE.**



It should look like this. The end of the harness adjuster which is left inside the seat base can be coiled up and left there. The other end of the harness adjuster at the front of the seat can be left hanging outside, just a small amount, as shown.



Remove the crotch strap by twisting and feeding the metal retaining keeper through the **BOTTOM** of the child seat and up through the seats' upholstery.

To set up for use from 15kg to 25kg - continued

To attach the diagonal belt adjuster, thread the loose strap through the seat base. Attach the loose end to one of the harness plastic keepers, having first removed this from the end of the harness which is no longer required. To remove and attach the plastic keepers refer back to picture 1 in this section.

The adjuster should be fitted on the side opposite from the car's seat buckle.



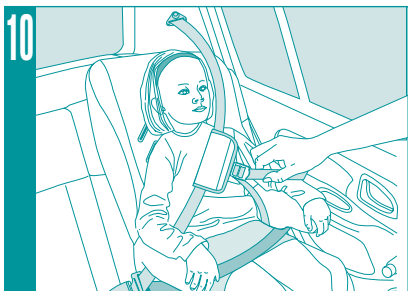
To fit the child's car seat, place it on a passenger seat with a 3 point seat belt. Make sure it is facing towards the front of the car.



Pull the lap and diagonal sections of the car seat belt across and secure it in the normal way.

Make sure that there are no kinks or twists in the car seat belt.

The lap belt should be routed under both the arm rests of the child seat.



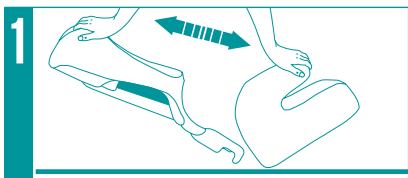
The diagonal belt adjuster may make it more comfortable for your child to use the diagonal car seat belt. It is designed to keep the diagonal belt away from your child's neck. Its use is optional.

The pad at the end of the diagonal belt adjuster opens. Connect it to the diagonal section of the seat belt. Pull gently on the loose end of the strap to pull the diagonal car seat belt slightly downwards.

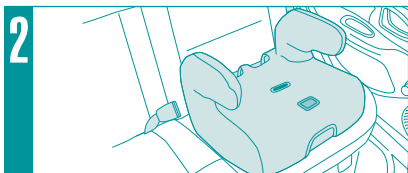
7

Fitting your child seat into your car

To set up for use from from 22kg to 36kg



When your child reaches this weight the child seat can be used as a 'booster seat' by removing the back section of the seat. If you have not already removed the child's harness, do this first. Refer to diagrams 1 to 10 on pages 8, 9 and 10. The back section of the seat is removed by pushing the back of the seat away from the base of the seat.



Place the child's car seat on the passenger seat with a 3 point seat belt. Make sure it is facing towards the front of the car.



Pull the lap and shoulder sections of the car seat belt across and secure it in the normal way. The lap belt should be routed under both the arm rests of the child seat.



The diagonal belt adjuster may make it more comfortable for your child to use the diagonal car seat belt. It is designed to keep the diagonal belt away from your child's neck. Its use is optional.

The pad at the end of the diagonal belt adjuster opens. Connect it to the diagonal section of the seat belt. Pull gently on the loose end of the strap to pull the diagonal car seat belt slightly downwards.

8

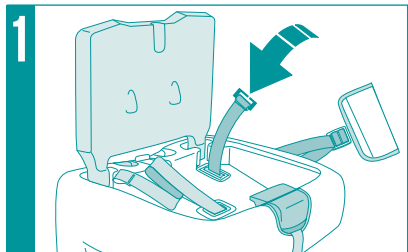
Final checklist

However safe a child seat is, however well built it is, your child's safety depends on you. Read this final checklist once you have fitted your child seat in your car.

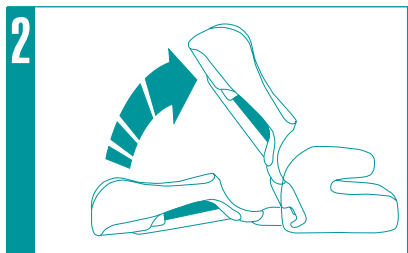
1. Check that you have adjusted the harness to suit your child.
A fitting for winter clothes will be too loose for a child wearing summer clothes.
 2. Check you have installed your child seat properly using a 3 point lap and diagonal belt.
See section 7, fitting your child seat into your car.
 3. Check that your child seat is secure before each journey.
- REMEMBER:** Misusing your child seat will reduce the protection and safety you offer your child.

Returning the seat to its configuration for younger children

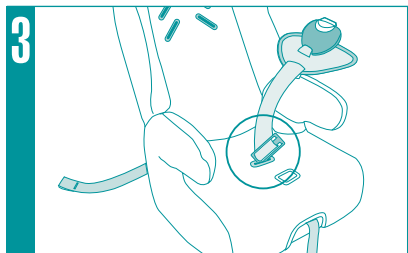
AFTER YOU HAVE USED THE CHILD SEAT FOR AN OLDER CHILD (GROUP 2 OR 3) YOU MUST FOLLOW THE GUIDELINES BELOW WHEN RE-USING THE SEAT FOR A YOUNGER (GROUP 1) CHILD.



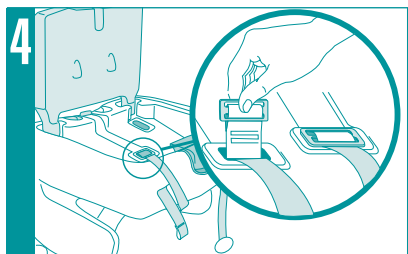
Remove the diagonal belt adjuster. Remember to remove the plastic keeper, which should be re-attached to the shoulder harness strap.



Re-fit the child seats' back.
Lay the seat back flat.
Engage the two locating pegs and lift it upwards.

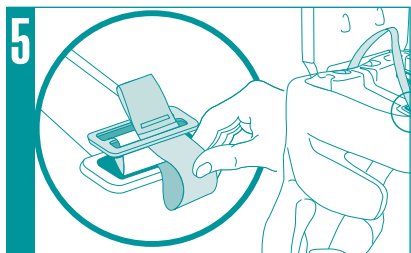


Push the metal retaining keeper of the crotch strap through the seat base.

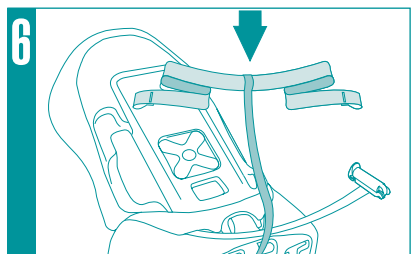


Open the seat base.
Pull the keeper through.
The harness adjuster passes through the same slot.

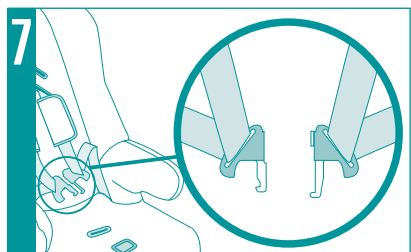
Returning the seat to its configuration for younger children



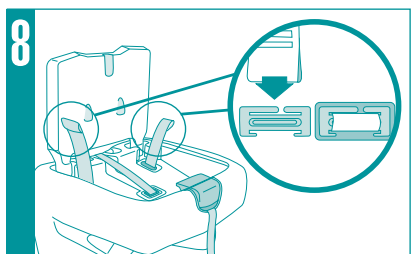
When the keeper is in position, feed the one pull adjuster through the keeper, from the front of the seat to the back as shown.



Thread the shoulder straps through loop in the adjuster.
Fit the Lock off clip, twist its plastic retainer through the seat back.



Thread the shoulder straps through the back of the seat, the shoulder pads, the harness and the seat base.



Fit the blue plastic clips onto the ends of the shoulder harnesses.
Check all fittings are secure before use.

Removing the fabric cover

- The fabric cover can be removed from the seat. You will have to remove the crotch strap first.
To remove the child's harness refer to diagrams 1 to 10 on pages 8, 9 and 10.
Release the elasticated edges of the cover from the seat. Carefully remove the cover.
The cover can be machine washed by following the instructions on the care label which is sewn into the cover.

Cleaning the seat

- The harness and plastic parts can be sponged with a mild detergent and warm water.
Ensure no soap gets into the buckle or adjusters.
Do not use chemical cleaners or bleach on the harness straps.
Dry thoroughly before use.

Your child seat and its cover have been carefully designed, manufactured and tested to the highest safety standards.

Do not put your child's safety at risk by using without a seat cover. The seat cover should not be replaced with any other than the one recommended by Mothercare, because the cover constitutes an integral part of the restraint performance.

The safety of this seat may be compromised by the use of accessories not approved by Mothercare.

If you have a problem with this product or require replacement parts, please contact your nearest Mothercare store or telephone the Mothercare Customer Care Line on 01923 210 210.

Alternatively, write to: Customer Care, Cherry Tree Road, Watford, Herts. WD24 6SH

Notice

1. This is a 'Universal' child restraint. It is approved to Regulation No. 44.03 series of amendments, for general use in vehicles and it will fit most, but not all car seats.
2. A correct fit is likely if the vehicle manufacturer has declared that the vehicle is capable of accepting a 'Universal' child restraint for this age group.
3. This child restraint has been classified as 'Universal' under more stringent conditions than those which applied to earlier designs which do not carry this notice.
4. If in doubt, consult either the child restraint manufacturer or the retailer.
5. Only suitable if the approved vehicles are fitted with 3 point static or retractor safety belts approved to UN/ECE Regulation No.16 or other equivalent standards.

Made in France for Mothercare, Watford, Herts, WD24 6SH