



IMPORTANT!

You must ensure that you follow these instructions carefully and correctly. If this seat is not fitted securely and your child is not strapped in correctly, your child and other passengers are at serious risk of injury in the event of an accident

Please read this User Guide carefully BEFORE trying to install your child car seat

The Hampshire Trading Standards Authority and Britax advise that child car seats should not be bought or sold second-hand. Please dispose of your child seat safely. Do not sell or pass it on.

After an accident, the child seat and your car seat belts should be replaced. Although they may look undamaged, if you were to have another accident the child seat and your car seat belts may not be able to protect your child as well as they should.

No child seat is escape proof

Belt restraint systems cannot be designed to be completely "child proof" and yet comply with the legal requirements of European Standard ECE R44.

Looking after your child seat

The child seat and its cover have been carefully designed, manufactured and tested to high safety standards.

Cleaning the cover

Please read the labels on the cover for washing instructions.

DO NOT tumble dry the cover – short spin and drip dry only.

Cleaning the shell

Sponge clean **ONLY** using hand soap and warm water.

DO NOT use solvents, detergents or washing-up liquid as these may weaken the seat.

IMPORTANT – The cover is a safety feature. **NEVER** use the child seat without it. Don't put your child's safety at risk by using other makes of replacement cover, they could stop the child seat from protecting your child as well as it should.

A replacement cover is available from your Britax stockist or contact Britax Customer Service Department on **01264 386034**.

Guarantee

All Britax products are carefully designed, manufactured and tested. However, should this product prove faulty within 12 months of purchase due to a materials or manufacturing fault please return it to the original place of purchase. We will then, at our discretion, either repair it free of charge or replace it with the same or a similar product.

For guarantee purposes proof of purchase will be required. We recommend that you retain your receipt and attach it to this user guide. They should be kept in a safe place.

Britax does not accept liability for damage arising from abuse, misuse or negligence. This guarantee is not transferable and therefore does not apply to second-hand products.

Your statutory rights are not affected by this guarantee.

Britax Excelsior Limited

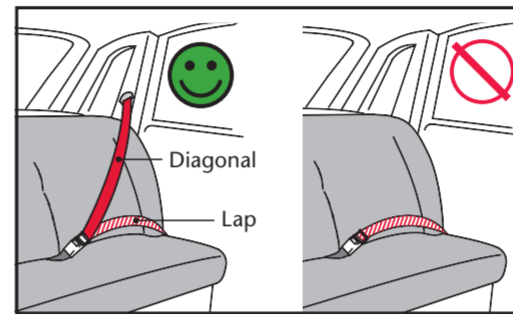
1 Churchill Way West
Andover
Hampshire SP10 3UW
United Kingdom

A Britax Childcare company

Customer Service Helpline: 01264 386034
Email: helpline@uk.britaxeuropa.com
Switchboard: 01264 333343
Fax: 01264 334146

www.britax.co.uk

WARNING Britax, whilst taking into account child car seat contact with vehicle seats throughout the development of new products, cannot accept responsibility for damage occurring to vehicle seats or seat belts.



IMPORTANT – The child seat **MUST** only be used with a lap and diagonal seat belt (approved to UN/ECE Regulation no. 16 or other equivalent standards).

WARNING

DO NOT use the child seat on a passenger seat fitted with an active front airbag unless your vehicle manufacturer confirms that it is safe.



DO NOT use the child seat on side facing vehicle seats.

DO NOT use anything, such as a cushion or coat, to raise the child seat off the passenger seat.

DO NOT attempt to dismantle, modify or add to any part of the child seat or change the way your car seat belts are made or used.

DO NOT use the child seat without the cover fitted.

DO NOT leave loose objects, such as luggage or books, in the back of your car. They must be properly secured.

DO NOT leave folding passenger seats unlatched. If you have to stop your car suddenly a loose seat back could injure your child.

DO NOT leave children alone in your car, even for a short time.

DO NOT allow children to play with or adjust the child seat.

DO cover the child seat if your car is left in direct sunlight. Fittings can become hot to touch in sunny weather and the cover may become faded.

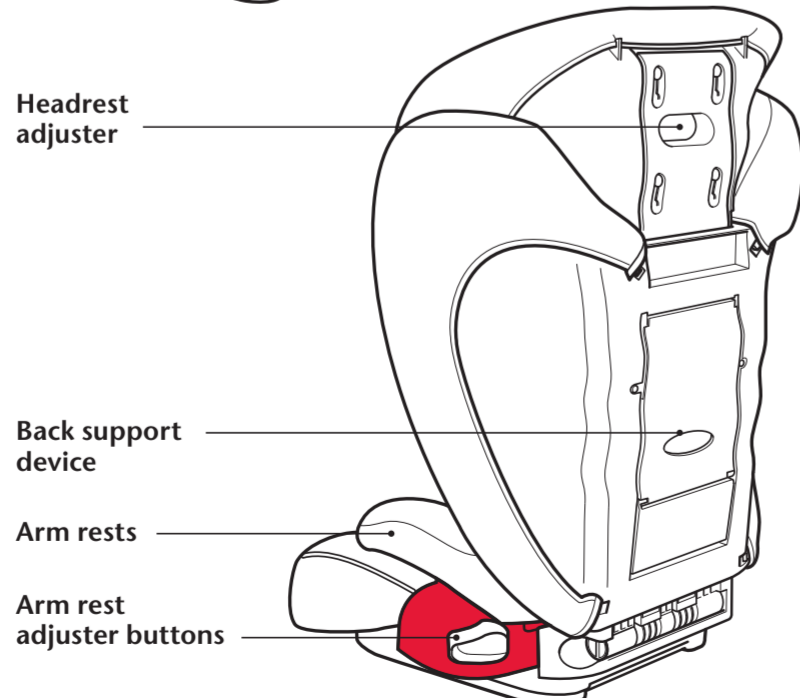
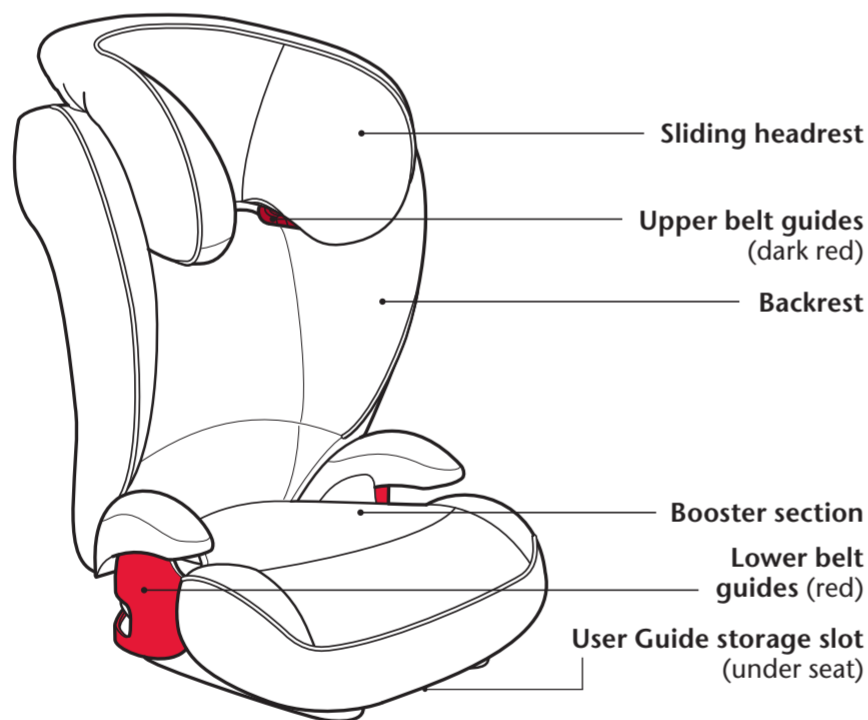
DO keep this user guide safe for future reference in the storage slot (under seat).

DO make sure that the child seat does not become trapped by a folding passenger seat or in the door of your car.

DO store the child seat in a safe place when it is not being used. Avoid placing heavy objects on top of it and do not store near direct heat sources.

DO always keep the child seat secure, even if it is not being used by your child.

Introducing your new child car seat



Britax

Evolve 2-3 Ultra

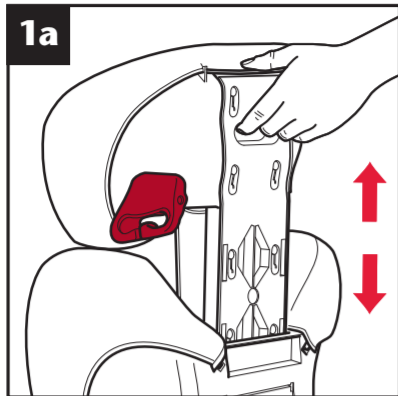


UK User Guide

BB0-649-00 1/5

Children weighing 15-36kg (approx 4-11 years)

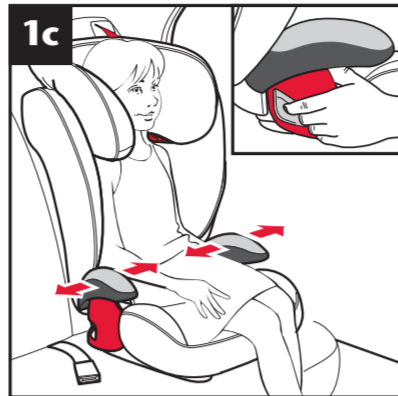
1 Adjusting the child seat



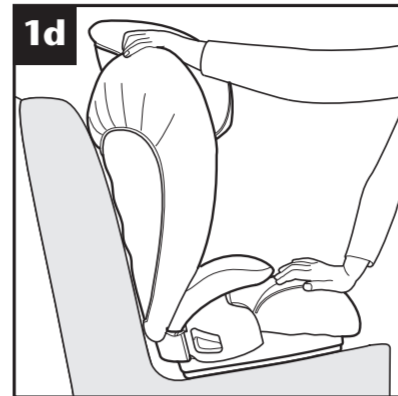
IMPORTANT – You must check that the headrest is in the correct position for your child before each journey. With the seat supported, squeeze the headrest adjuster at the back of the headrest (**dia 1a**).



Move the headrest up or down so that the head is positioned centrally as in the picture (**dia 1b**). When the headrest is in the correct position let go of the headrest adjuster and ensure it has locked into place.

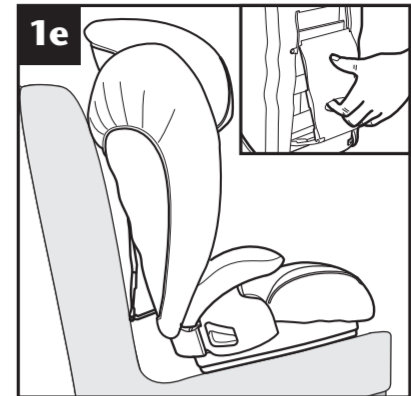


Adjust the width of the seat section by gripping the grey handles and inserting your finger in the adjustment slots on either side. Pull up the adjustment mechanism with your fingers and slide the handles to the correct width to suit your child (**dia 1c**). You must ensure the arm rest adjuster buttons have fully engaged.



To adjust the backrest, push it firmly until you feel and hear a click. The backrest will now pivot freely and does not need to click into another position (**dia 1d**).

IMPORTANT – The backrest of the child seat **MUST** always be in contact with the car's seat back **AND** the base section of the child seat **MUST** always be in contact with the car's seat base.

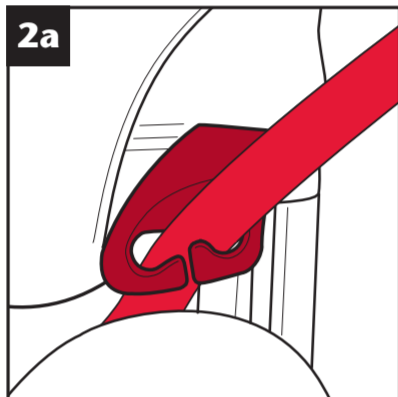


If you find it difficult to make the back of the child seat sit flat against the vehicle seat you have the option of using the back support device (**dia 1e**).

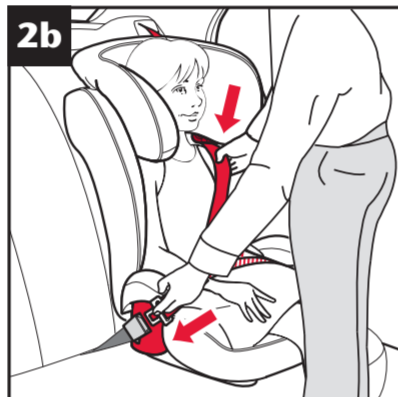
IMPORTANT – Have you adjusted the headrest to the correct position for your child and ensured that the seat has an appropriate recline angle?

2 Installing the child seat in your car

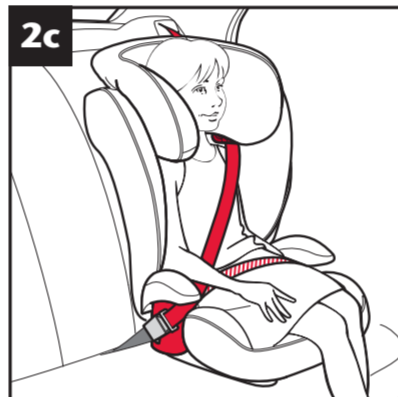
IMPORTANT – This child seat **MUST** only be used with a lap and diagonal seat belt (approved to UN/ECE regulation no. 16 or equivalent standards).



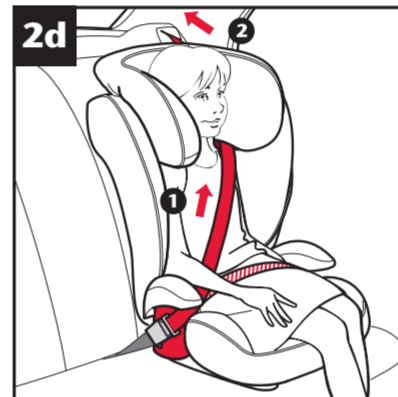
IMPORTANT – You **MUST NOT** use the child seat for a child weighing more than 36kg. Place the child seat forward facing in your car, ensuring it is pushed firmly into the car seat. Feed the diagonal section of the seat belt through the dark red upper belt guide on the **OPPOSITE** side to the buckle (**dia 2a**).



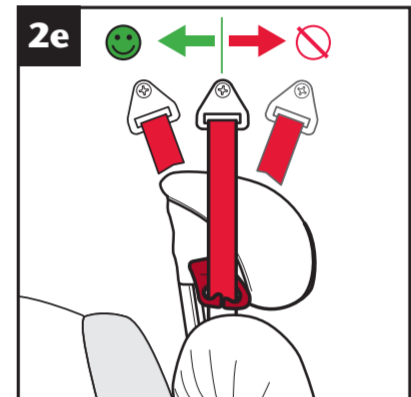
IMPORTANT – When installing the child seat, the vehicle seat must be kept in a normal upright position at all times. Reclining the vehicle seat will adversely affect the performance of the seat in a crash. Fasten the seat belt across your child. The lap section of the seat belt should rest on the red lower belt guides on each side of the child seat (**dia 2b**).



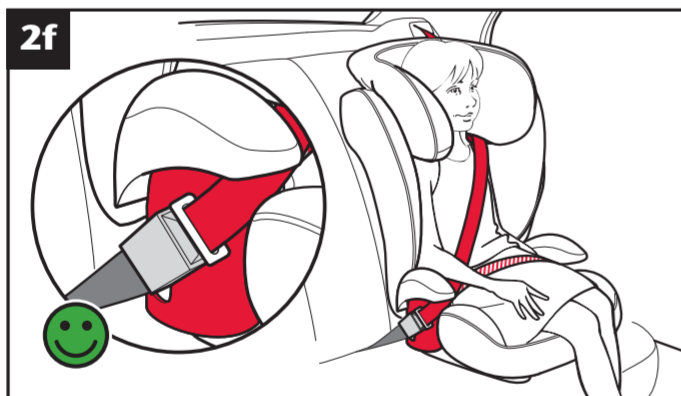
IMPORTANT – The lap section of the seat belt should rest as forward and as low as possible over your child's pelvis. Remove as much slack as possible from the seat belt and make sure it is fitted comfortably but tightly and is not twisted (**dia 2c**). **IMPORTANT** – You must use the upper belt guide at all times.



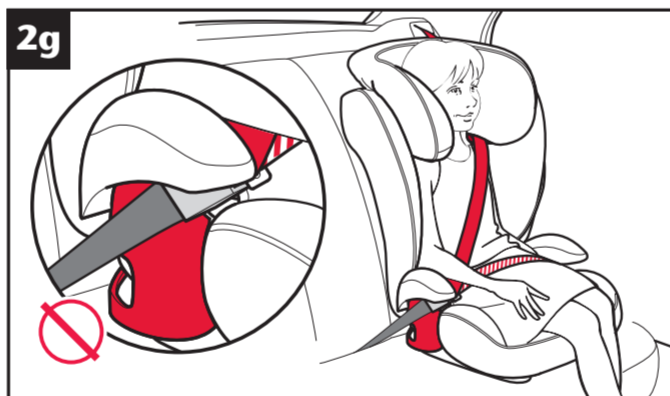
IMPORTANT – Ensure that the diagonal section of the belt lays over the shoulder of the child and **NOT** against the neck. Tighten the seat belt by pulling the diagonal section in the direction of the arrow **1** (**dia 2d**). If your vehicle has an adjustable seat belt upper anchorage, adjust its height so that the seat belt passes



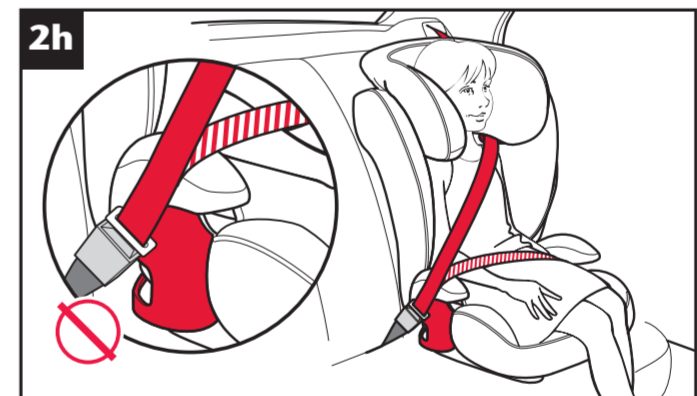
through the centre of the upper belt guide on the child seat and pull the seat belt to tighten **2**. **IMPORTANT** – The child seat must not be installed in a position where the seat belt anchorage point is level with, or forward of, the upper belt guide (**dia 2e**).



Correct buckle position
IMPORTANT – Once you have installed the child seat it is important that you check the position of the seat belt buckle to ensure a secure installation. If the seat belt buckle looks like this then the seat belt buckle position is correct (**dia 2f**).



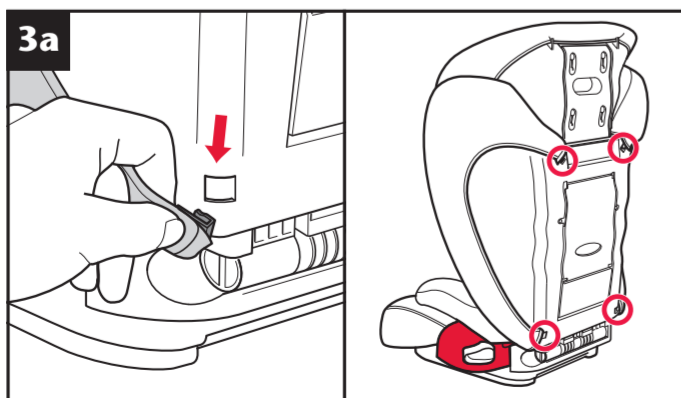
If the seat belt buckle looks like this, where the buckle is being pulled around the shell into the red lower belt guide (**dia 2g**), try another seating position in the car. **IMPORTANT** – Do not leave your child seat loose. Always fasten the seat belt across the child seat when it is not being used by your child to prevent the seat being hurled forward in the event of an accident.



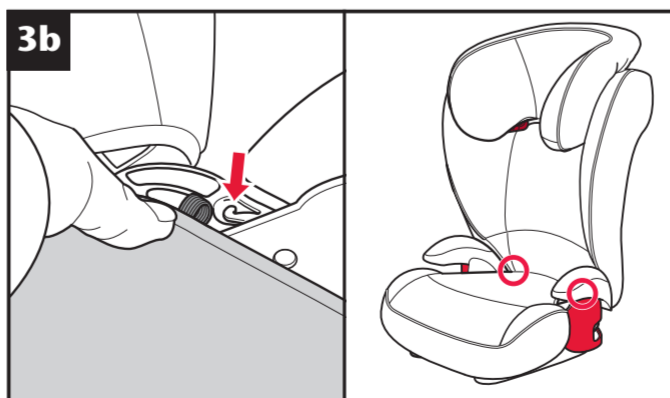
If the seat belt does not lie within the red lower belt guides then the seat is not properly installed (**dia 2h**). If you are in any doubt contact Customer Services on 01264 386034. To release your child simply undo the seat belt.

NOTE – The backrest and booster section can be separated by laying the backrest flat, pulling out the plastic flap from underneath the booster section cover and sliding the backrest sideways out of the booster section.

3 Looking after the child seat



Removing the cover
Unhook the clips which hold the backrest cover section in place (**dia 3a**). The red circles show their location.



Unhook the elastics from the hooks at the back of the booster section (**dia 3b**). The front edges of the booster cover section can now be pulled away from the seat. Unhook the headrest



cover section **1** (**dia 3c**). The red circles show their location. Pull the headrest cover off the red upper belt guides **2**. Finally unhook the clips at the base of the backrest **3**.