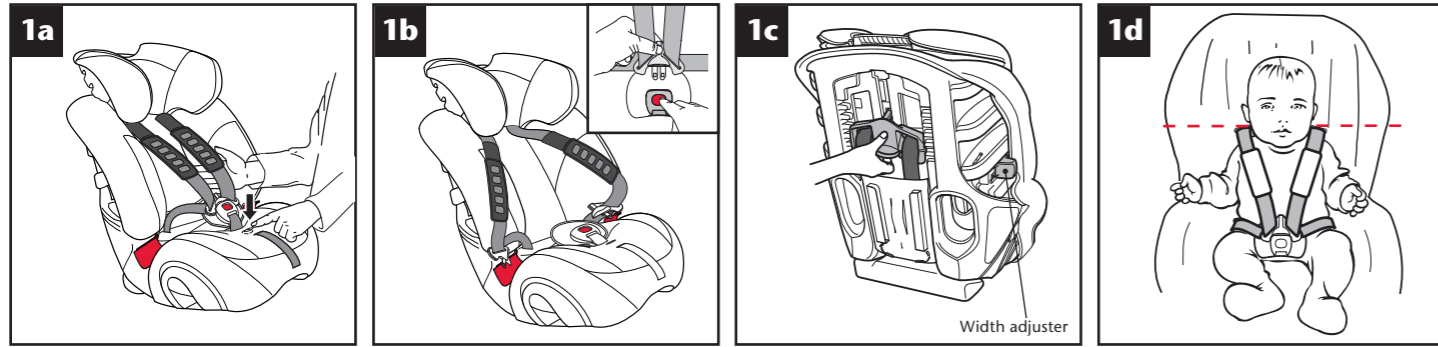


Children weighing 9 - 18kg (approx 9 months - 4 years)

1 Adjusting your child seat



Place the child seat on the floor. Push the adjuster button in and at the same time pull BOTH shoulder straps forward as far as possible (dia 1a).

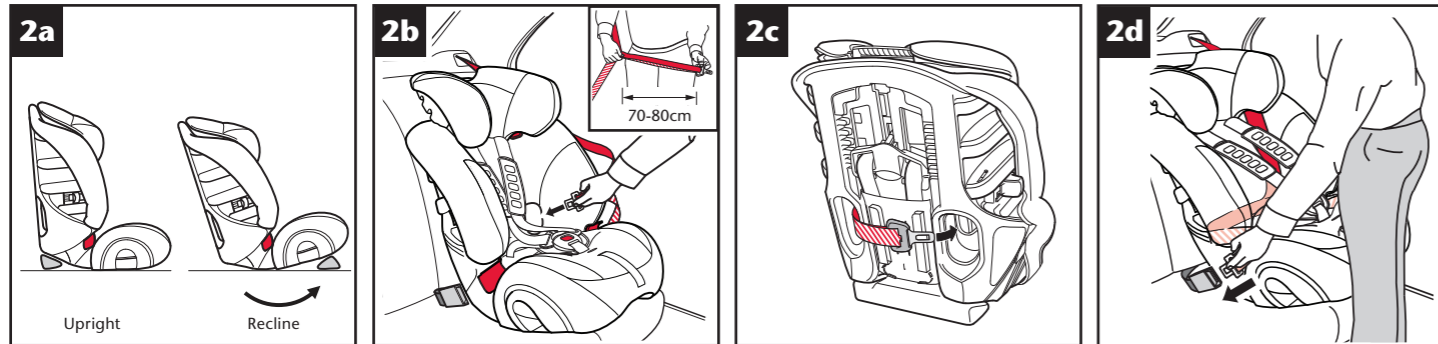
Release the harness from the buckle (dia 1b inset). Lay the shoulder straps over the sides of the seat to avoid the harness twisting. Carefully place your child in the seat, fit the harness loosely around them and re-fasten the harness buckle.

Lift the harness adjuster at the back of the seat shell and move it up or down (dia 1c) so that the harness strap slots in the headrest are level with or just above your child's shoulders (dia 1d). When the headrest is in the correct position let go of the harness adjuster and ensure it has locked into place.

Once you reach the top slots your child may continue to use the seat until their eye level becomes level with the top of the seat or their weight exceeds 18kg. If you wish to adjust the width of your child seat, push the width adjuster (dia 1c) (Ultra version only).

2 Installing your child seat in your car

IMPORTANT - This child seat MUST only be used with a lap and diagonal seat-belt (approved to UN/ECE regulation no. 16 or equivalent standards).

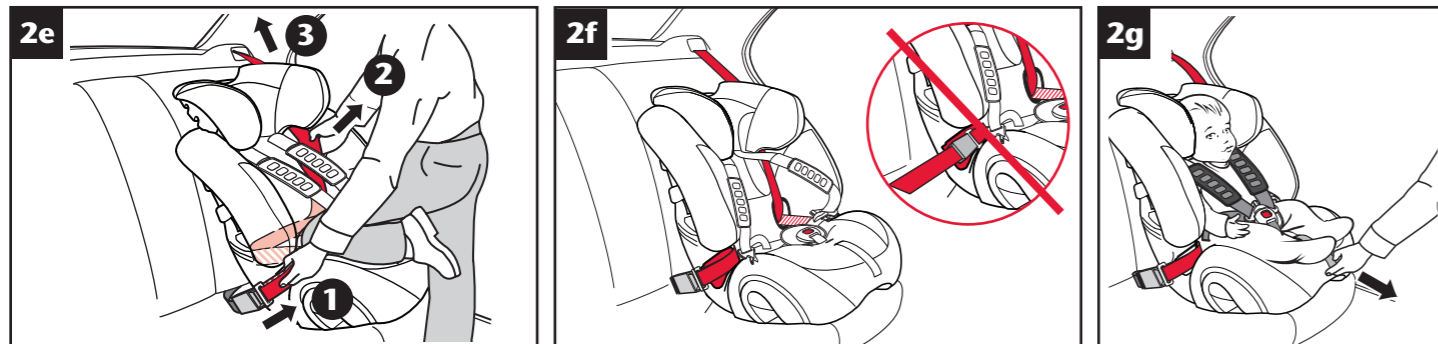


Use the adjustment base to select angle of the child seat before installing into the vehicle (dia 2a). **HANDY HINT** - During installation, if your seat belt is too short, make sure the child seat is in the upright position (dia 2a). This may help.

Place the child seat forward facing in your car. Pull out the seat belt as shown holding the lap and diagonal sections together (dia 2b inset). **IMPORTANT** - Do not allow the belt to twist at any time. Feed the seat belt around the front of the child seat, through the first routing slot, directly into the back of the seat at the point shown (dia 2b).

Turn the front of the child seat towards you, grab the seat belt and pass it through the second routing slot (dia 2c). **HANDY HINT** - If your seat belt is too short you may need to direct the diagonal section behind the headrest before starting the installation.

Pull all the slack from the seat-belt to the front of the child seat and fasten the seat-belt in the buckle (dia 2d). Make sure the seat-belt is not twisted and the lap section passes across both red lap belt guides. Please ensure the diagonal belt is positioned in the back corner of the child seat shell behind the headrest.



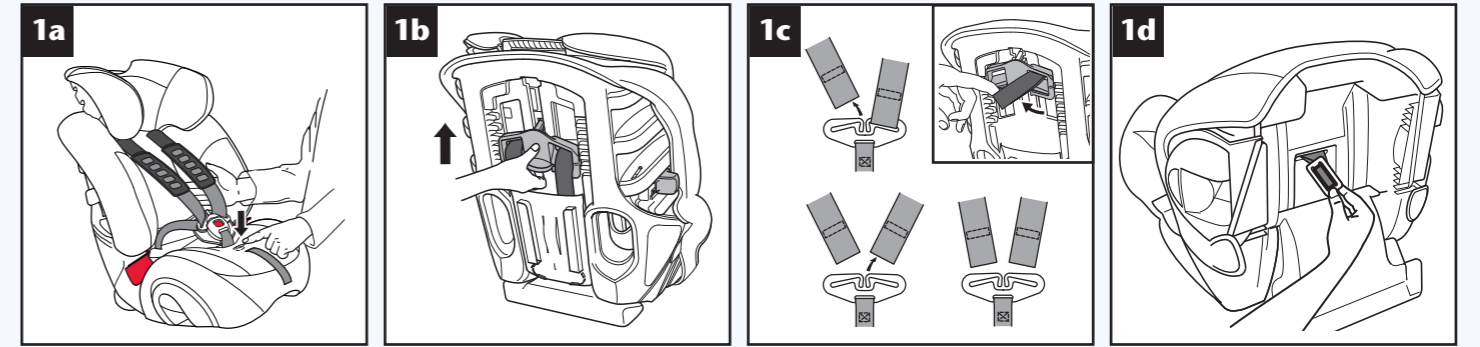
Push the child seat into your vehicle seat using your full body weight and tighten using the following sequence. Pull & hold the diagonal belt 1 pull at position 2 to remove all the slack and pull to tighten 3 (dia 2e). Check the seat by pulling firmly on the harness. There should be little or no movement. If the child seat is still loose then carefully repeat the tightening sequence above.

IMPORTANT - Check the position of the seat belt buckle, ensuring that it is the seat belt NOT the seat belt buckle holding the seat in (dia 2f). If your seat belt buckle is incorrectly located (inset) try another seating position. If you are in any doubt contact **Customer Services** on **01264 386034** or use our **Fit-finder** service at www.britax.co.uk.

Tighten the harness by pulling the adjuster strap forward making sure the harness is comfortable but firmly fitted around your child. Make sure the harness straps are not twisted. Finally, ensure the chest pads are pulled down onto your child's chest (dia 2g).

Children weighing 15 - 36kg (approx 4 - 11 years)

1 Adjusting your child seat



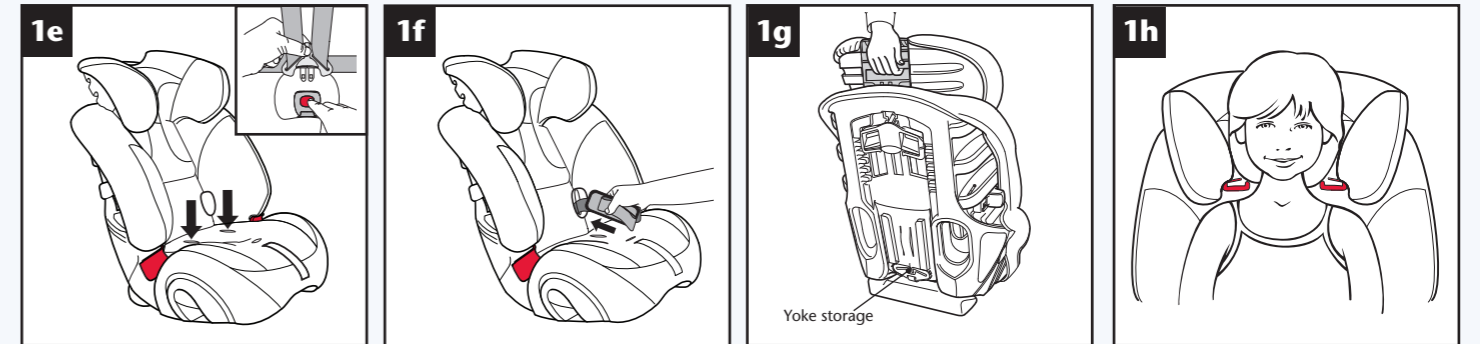
To stow away the harness in the child seat, first place the child seat on the floor. Push the adjuster button in and at the same time pull BOTH shoulder straps forward as far as possible (dia 1a).

Turn the seat around. Lift the harness adjuster at the back of the seat shell and move it up so that the shoulder strap slots in the headrest are in the top position (dia 1b).

Unhook both shoulder straps from the yoke at back of child seat (dia 1c) and stow the yoke on the lower part of the belt shield (dia 1g). **Remove the chest pads from the chest pad attachment arms (dia 1c inset).**

Pull both the shoulder straps and the chest pads through to the front of the seat and remove chest pads from shoulder straps.

Place the child seat on its back. Remove the adjuster strap from the bracket of the crotch strap. Turn the bracket so that it will go through the crotch strap slot and push it through to the front of the seat (dia 1d).



Stand the child seat upright and release the harness from the buckle. Push the harness straps and buckle tongues underneath the cover through the lap belt slots (dia 1e). Place buckle into the storage area provided in the lower part of the backrest underneath the cover.

Place harness straps and chest pads into the elastic loops that are attached to the Cover in the area of the seat-belt routing slots (dia 1f). Push the adjuster strap through the slot in the cover to store.

With the seat supported, squeeze the headrest adjuster at the back of the headrest (dia 1g). Please check that you have removed the chest pads as directed in (dia 1c) above.

Move the headrest up so that the head is positioned centrally (dia 1h). When the headrest is in the correct position let go of the headrest adjuster and ensure it has locked into place.

2 Installing your child seat in your car

IMPORTANT - This child seat MUST only be used in the reclined position for children taller than 1.2metres (approximately 6 years and older).



Place the child seat forward facing in your car and feed the diagonal section of the seat belt through the dark red upper belt guide on the OPPOSITE side to the buckle (dia 2a).

Fasten the seat-belt across your child (dia 2b). The lap section should sit as low as possible over your child's thighs, in contact with the pelvis and resting on the red lap belt guides on each side of the child seat. Make sure the seat-belt is not twisted and remove the slack. **IMPORTANT** - Check the position of the seat belt buckle, ensuring that it is not being pulled around the child seat onto the red lap belt guide (inset).

Check the position of your vehicle's upper seat belt anchorage point (dia 2c). If this anchorage point in your car is in front of the child seat as shown it should not be used. If you are unsure how to fit the child seat contact **Customer Services** on **01264 386034**.



IMPORTANT!

You must ensure that you follow these instructions carefully and correctly. If this seat is not fitted securely and your child is not strapped in correctly, your child and other passengers are at serious risk of injury in the event of an accident

Please read this User Guide carefully BEFORE trying to install your child car seat

The Hampshire Trading Standards Authority and Britax advise that child car seats should not be bought or sold second-hand. Please dispose of your child seat safely. Do not sell or pass it on. Britax whilst taking into account child car seat contact with vehicle seats throughout the development of new products, cannot accept responsibility for damage occurring to vehicle seats or seat-belts.

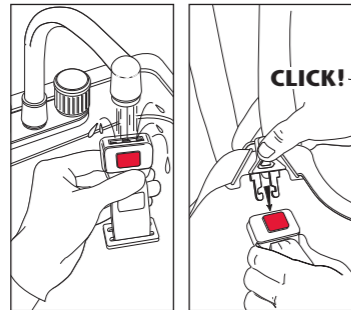
After an accident, the child seat and your car seat-belts should be replaced. Although they may look undamaged, if you were to have another accident the child seat and your car seat-belts may not be able to protect your child as well as they should.

Harness systems cannot be designed to be completely "child proof" and yet comply with the legal requirements of European

Standard ECE R44. The harness must be fastened and adjusted correctly at all times and children encouraged to remain within the harness system.

Looking after your child seat

Food and drink may find their way inside the buckle of the harness. This can stop it from working properly – it will not click. Wash in warm water until clean.



The cover and chest pads are a safety feature. Never use the child seat without them. Don't put your child's safety at risk by using other makes of replacement cover, they could stop the child seat from protecting your child as well as it should.

A replacement cover is available from your Britax stockist.

Cleaning the cover

Please read the labels on the cover for washing instructions.

Do not tumble dry the cover - short spin and drip dry only.

Removing the cover

Follow the instructions for removing the harness (see overleaf) and with the headrest in an upper position, pull the edge of the cover away from the hooks located around the headrest and remove the cover. Turn the childseat on its back and unhook the elastic from around the cup

holders. Now pass the cover over the headrest.

Cleaning the harness and seat shell

Sponge clean ONLY using hand soap and warm water.

Do not take apart, or attempt to take apart, any part of the harness or seat when cleaning.

Do not use solvents, detergents or washing-up liquid as these may weaken the harness and the seat.

Guarantee

All Britax products are carefully designed, manufactured and tested. However, should this product prove faulty within 12 months of purchase due to a materials or manufacturing fault please return it to the original place of purchase. We will then, at our discretion, either repair it free of charge or replace it with the same or a similar product.

For guarantee purposes proof of purchase will be required. We recommend that you retain your receipt and attach it to this user guide. They should be kept in a safe place.

Britax does not accept liability for damage arising from abuse, misuse or negligence. This guarantee is not transferable and therefore does not apply to second-hand products.

Your statutory rights are not affected by this guarantee.

If in doubt

Not all car seats fit all cars. For advice as to the suitability of this restraint for your car please use **Fit-finder**® on our website at www.britax.co.uk, call our Customer Service Helpline on 01264 386034 or email helpline@britax.co.uk.

Britax Excelsior Limited

1 Churchill Way West
Andover
Hampshire SP10 3UW
United Kingdom

A Britax Childcare company

Customer Service Helpline:
01264 386034
Email: helpline@britax.co.uk
Switchboard: 01264 333343
Fax: 01264 334146

www.britax.co.uk

WARNING

DO NOT use the child seat on a passenger seat fitted with an active front airbag.

DO NOT use the child seat on side facing vehicle seats.

DO NOT use anything, such as a cushion or coat, to raise the child seat off the passenger seat.

DO NOT attempt to dismantle, modify or add to any part of the child seat or change the way your car seat-belts are made or used.

DO NOT use the child seat without the cover fitted.

DO NOT leave loose objects, such as luggage or books, in the back of your car. They must be properly secured.

DO NOT leave folding passenger seats unlatched. If you have to stop your car suddenly a loose seat back could injure your child.

DO NOT leave children alone in your car, even for a short time.

DO NOT allow children to play with or adjust the child seat.

DO NOT place hot liquids or sharp objects in the cup holder.

DO cover the child seat if your car is left in direct sunlight. Fittings can become hot to touch in sunny weather and the cover may become faded.

DO keep this user guide in the pocket on the back or underneath the child seat.

DO make sure that the child seat does not become trapped by a folding passenger seat or in the door of your car.

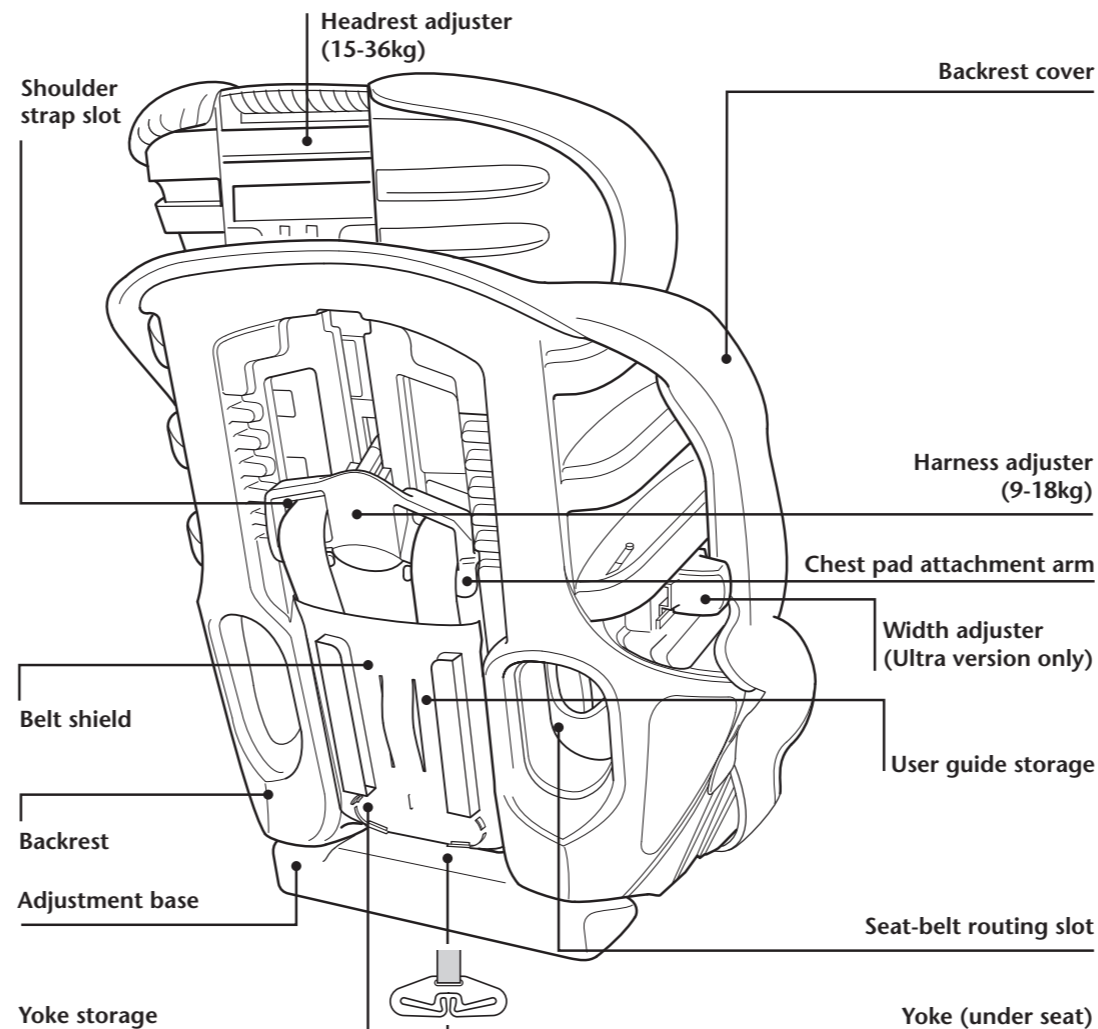
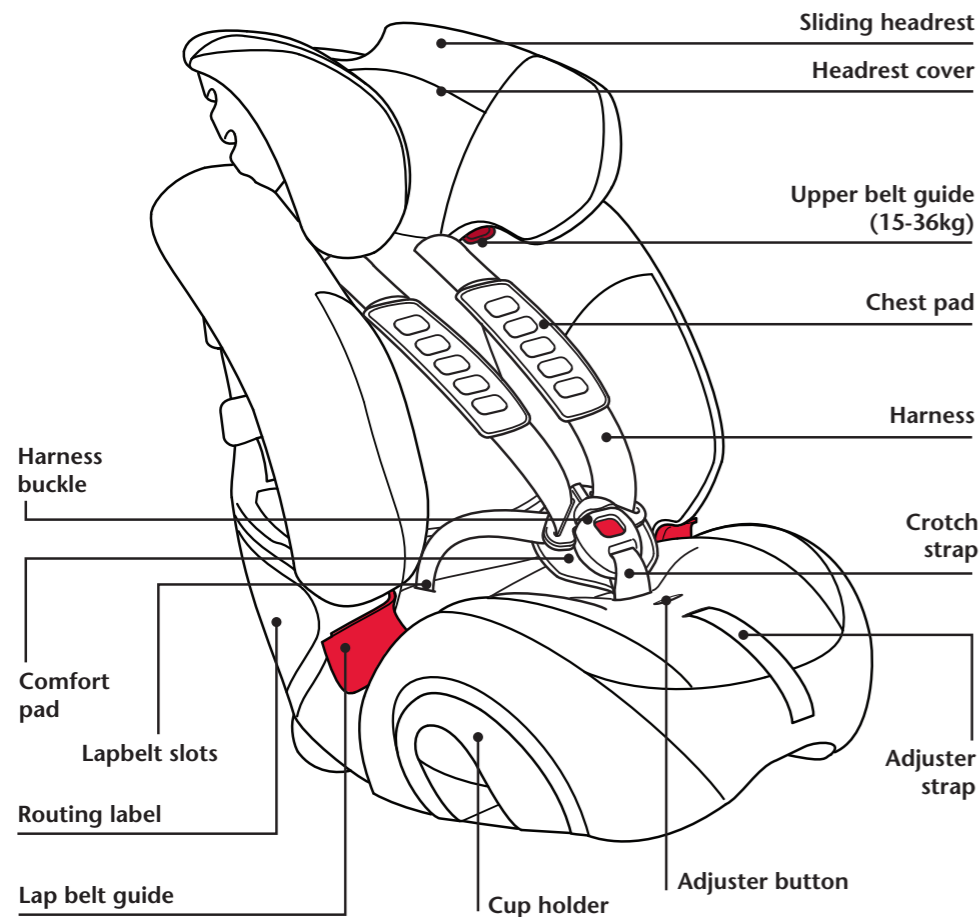
DO make sure that you adjust the harness to fit the clothes your child is wearing before each journey.

DO store the child seat in a safe place when it is not being used. Avoid placing heavy objects on top of it and do not store near direct heat sources.

DO always keep the child seat secure, even if it is not being used by your child.

IMPORTANT - The child seat MUST only be used with a lap AND diagonal seat-belt (approved to UN/ECE Regulation no. 16 or other equivalent standards).

Introducing your new child car seat



Evolve 123

