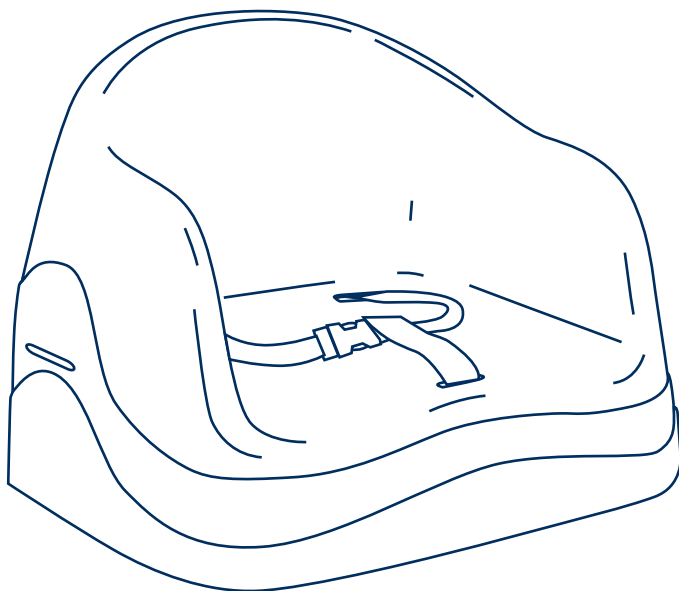




**basic**

booster seat

**user guide**



IMPORTANT. KEEP FOR FUTURE REFERENCE

## introduction

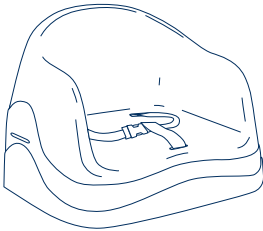
This booster seat is designed to be fitted to a suitable chair\*, to raise the height of your child when sat at a table.

Suitable for children who can sit unaided (around six to nine months) to around 4 years.

\* Refer to page 4 safety notes for information on suitable types of chairs.

## parts checklist

fig 1



seat & harness

fig 2

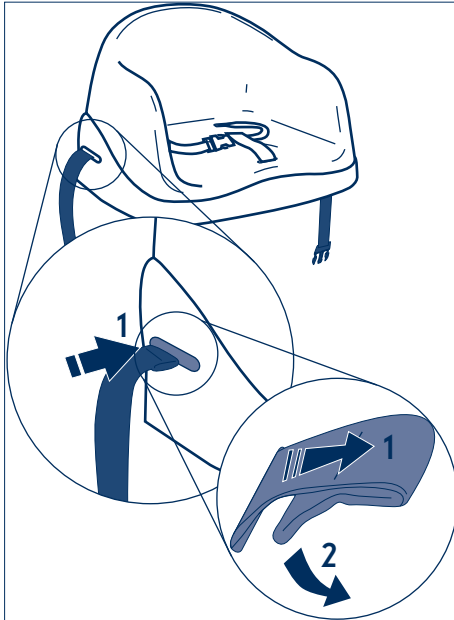


securing strap

## preparation for use

### the securing strap

fig 3

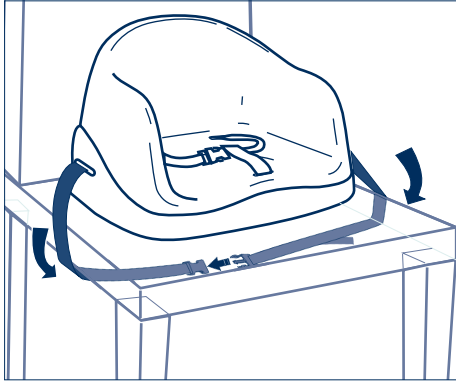


1. Insert the end of one part of the securing strap through the slot in one side of the booster seat as shown left.
  2. Open out the webbing so the strap cannot pull back through the slot.
- Repeat for the other part of the strap.

## preparation for use

### fixing to the chair

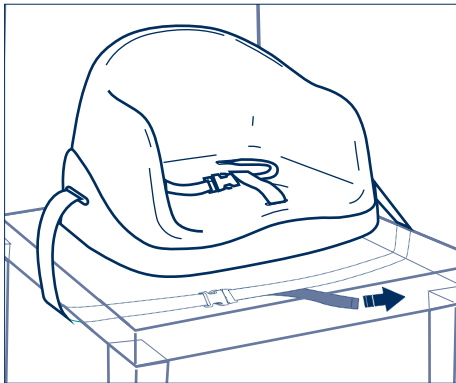
fig 4



Position the booster on the chair\*, wrap the securing strap underneath, and fasten the buckle.

\* Refer to page 4, safety notes for information on suitable types of chairs.

fig 5



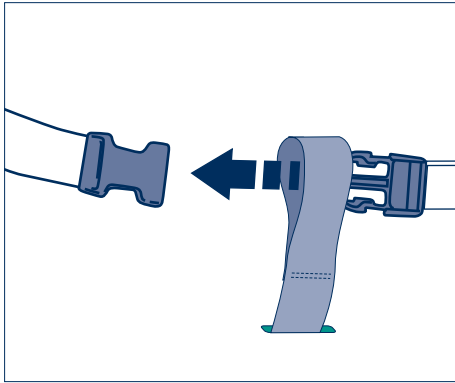
Tighten the securing strap by pulling on the free end to remove any slack.

Always check that it is secure and stable before placing your child in the seat.

On cushioned chairs, it may be necessary to further tighten the strap once your child is in the seat.

the harness

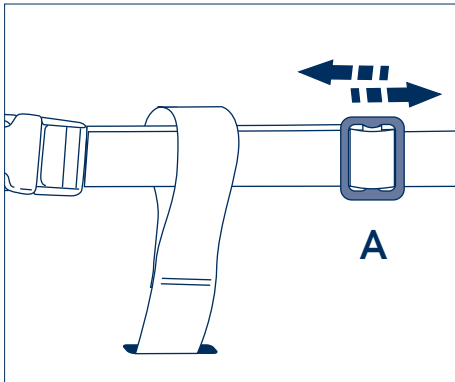
fig 6



To fasten

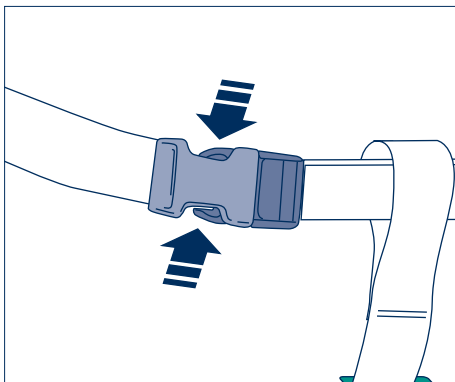
Pass one end of the waist strap through the loop on the crutch strap and insert the fastener securely into the clasp.

fig 7



Adjust the waist strap length with adjuster A.

fig 8



To release

Squeeze the fastener prongs and pull apart.

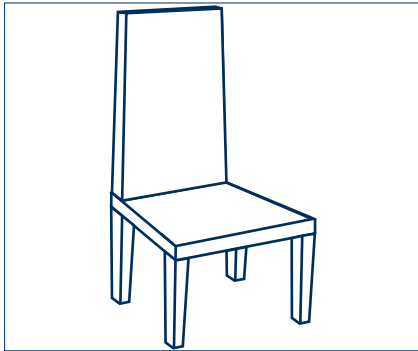
Your child should be securely harnessed at all times and should never be left unattended, even for short periods.

## care of your product

- The booster can be cleaned by sponging with warm water and a mild detergent. A mild disinfectant may be used.
- Stubborn marks may be removed with a non-abrasive cream cleaner. Never clean with abrasive, ammonia based, bleach based or spirit type cleaners.
- Periodically check for damage, including internally, and discontinue use if any part is damaged or broken.

## safety notes

fig 9



The recommended type of chair is as shown left, with four legs, a high backrest, and firm seat.

If the chair has a cushioned seat, check the securing strap periodically to ensure it has not loosened.

Do not use the booster on a table top, stool, swivel chair, folding chair or any other type of chair to which the booster cannot be firmly secured.

- **WARNING! YOUR CHILD'S SAFETY IS YOUR RESPONSIBILITY.**
- The booster must be fully secured to the seat before placing a child inside.
- Ensure the harness is correctly fitted and adjusted at all times.
- When using the booster at a table, ensure the child cannot push against the table or another chair, and tip the booster and chair over.
- Keep away from trailing cords flexes, electric irons, ornaments and other such hazards.
- Do not use close to any source of heat.
- Never use the booster in a vehicle as a car seat.
- Do not move the booster or chair with the child inside.
- Do not use if any part is broken, damaged or missing.
- If the booster is used by someone unfamiliar with it e.g. grandparents always show them how it is used.
- Never leave your child unattended, even for the shortest time.