

iCANDY QUALITY NOTIFICATION

Replacement iCandy Buckle and Crotch Strap for the Peach 2016 and Designer Midnight Editions

- Bubble gum
- Olive
- Royal
- Claret

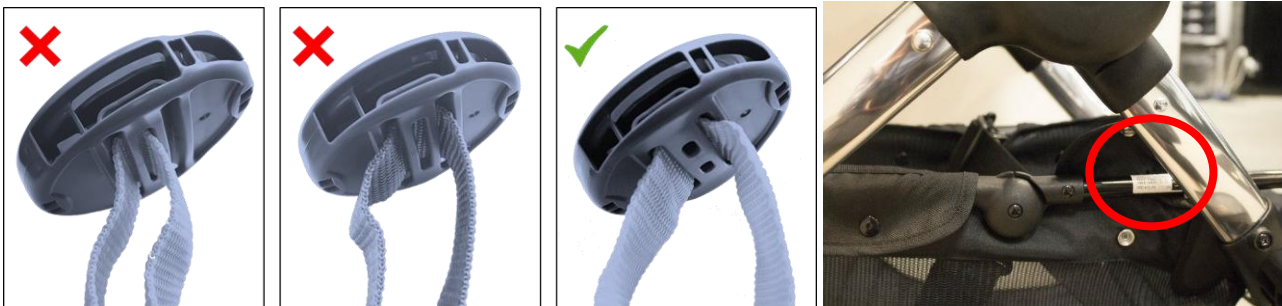


- Black Magic
- Butterscotch
- Peacock
- Truffle

As part of our on-going monitoring programme, we recently identified a very small number of iCandy buckles that have broken in use. This can result in the crotch strap coming away from the centre of the buckle. We have taken the decision to offer a replacement buckle and crotch strap, at no cost, to all customers that have products within the affected batch range.

We would like to provide all of these customers with our most up-to-date buckle, so please check the back of your buckle and contact us for an immediate replacement, should you have one of the older designs, (marked with an X), see the differences below.

IF YOU DO NOT HAVE A PEACH PUSHCHAIR WITHIN THESE BATCH NUMBERS, 10799 – E10910, OR A PEACH MIDNIGHT, THIS DOES NOT AFFECT YOU, REGARDLESS OF THE BUCKLE TYPE YOU MAY HAVE.



Please locate the serial and batch numbers at the top of your box or on your basket frame as shown in the image above right. A new buckle can be requested by telephoning customer services or going online, details of which can be found below:

Telephone: 01767 604400

Web: <https://www.icandyworld.com/uk/en/support/form/>

You will also find the batch and serial numbers on the base board, inside the seat unit, (you will find a velcro strip located at the rear and bottom of the seat).

We would advise all customers to use the 5-point harness at all times when a child is in the seat unit and ensure that all harness straps are adjusted correctly to suit the age and size of the child.

For removal or fitting instructions please click on the video link below and use the password **iC2016*** to access your guide to replacing your buckle.

<https://vimeo.com/187978282>

We would like to take this opportunity to sincerely apologise for any inconvenience this may cause to our customers. We take the safety of our products very seriously and our Technical Team continually review all products as part of our ongoing improvement initiative.